



MINERVA

R2036F SATA III to M.2 NGFF 2-port RAID Card

JBOD Mode Performance & Burn In Test Rev. 1.0

Table of Contents

1. Overview

2. Performance Measurement Tools and Results
 - 2.1 Test Platform
 - 2.2 Test target and Used SATA III / M.2 NGFF SSD
 - 2.3 Install Hardware
 - 2.4 BIOS & Windows 8.1 x64 OS environment setup
 - 2.5 CrystalDiskMark 3.0.1 x64 performance test
 - 2.6 AS SSD Benchmark 1.7 performance test
 - 2.7 ATTO Disk Benchamrk 2.47 performance test
 - 2.8 AnvilBenchmark_V110_B337 Benchmark performance test

3. Burn In Tests and Results
 - 3.1 BurnInTestv7.1 Pro burn in test

4. Summary

R2036F SATA III TO M.2 NGFF 2-port RAID Card

1. Overview

R2036F RAID card offers SATA 3 interface, built-in 2-port M.2 67-pin B key connector can be combined M.2 NGFF SSD into a RAID 0, RAID 1, JBOD mode of operation.

2. Tools and Results of Performance Measurement

2.1 Test Platform

M/B : ASRock **Z97 Extreme 6**
CPU : Intel **i5-4426**, 3.2GHz/ 6M Cache/ LGA1150
Memory : Kingston **KVR16N11S8 / 4**, DDR3-1600MHz, 8G(4GB DIMM*2)
ATX Power : FSP RAIDER 550, **550W ATX**, 12V V2.2 Power Supply
Graphic : Z97 Chipsets built-in **HD Graphics 4600**
OS : Microsoft **Windows 8.1 64bit OS**

2.2 Test target: R2036F RAID Card and M.2 NGFF SSD(LGT-128M6G/128GBx2)



R2036F Adapter



R2036F + M.2 SSD



LGT-128M6G x2pcs

2.3 Install Hardware

2.3.1 Insert M.2 SSDx2 into R2036F converter's B key connector, and then with coppers, and screws to fix SSDs. (Please refer to the Installation Notes).
Connect R2036F converter to **SATA III Port of ASRock Z97 Extreme6**.

2.4 BIOS & Windows 8 OS environment setup

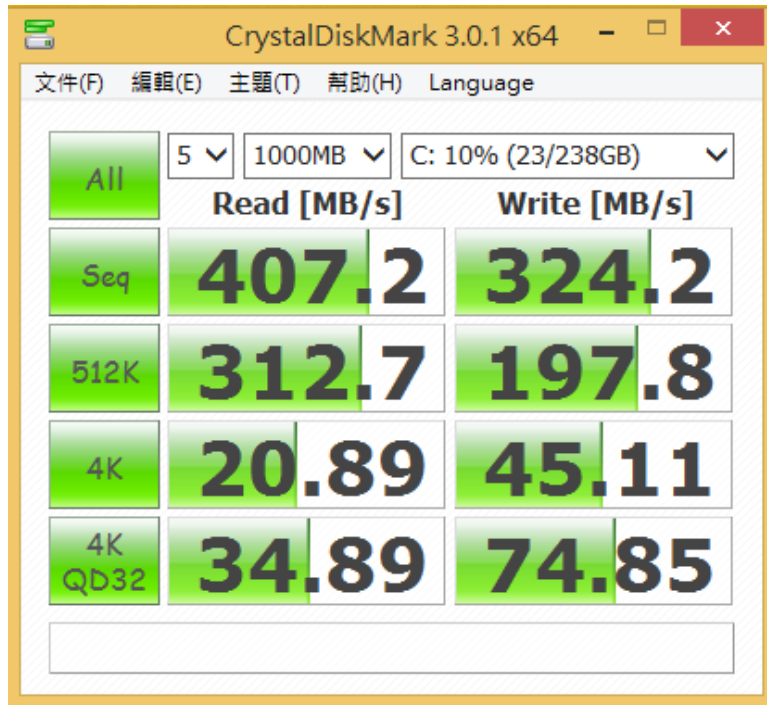
2.4.1 Install Windows 8.1 x64 OS.

R2036F SATA III TO M.2 NGFF 2-port RAID Card

2.5 CrystalDiskMark 3.0.1 x64 performance test

※Benchmark (Sequential **Read & Write** / default = **1MB**)

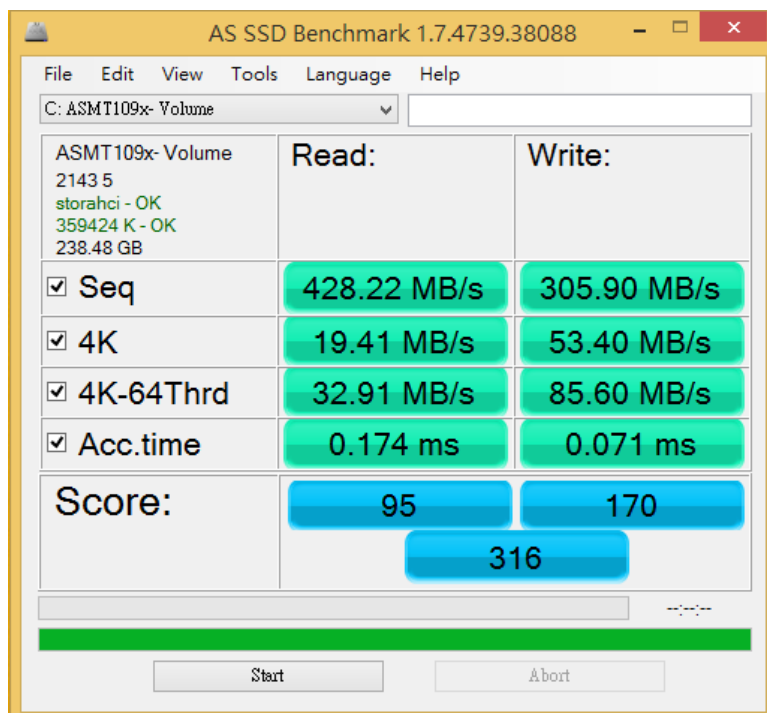
2.5.1 Used LITE-ON [LGT-128M6Gx2](#) in **Z97 Extreme 6 JBOD** performance as below:



2.6 AS SSD Benchmark 1.7 performance test

※Benchmark (**Read & Write** by MB/s, default block size = **16MB**)

2.6.1 Used LITE-ON [LGT-128M6Gx2](#) in **Z97 Extreme 6 JBOD** performance as below:

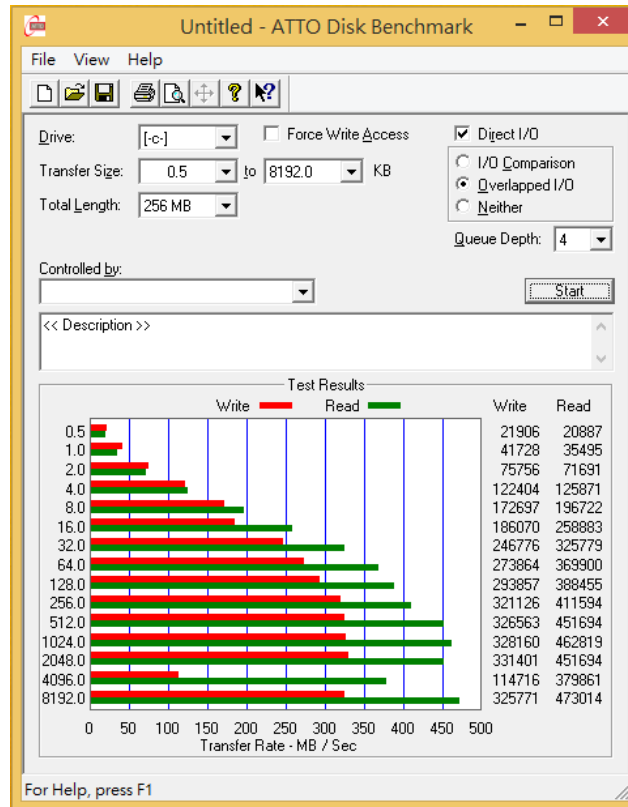


R2036F SATA III TO M.2 NGFF 2-port RAID Card

2.7 ATTO Disk Benchmark performance test

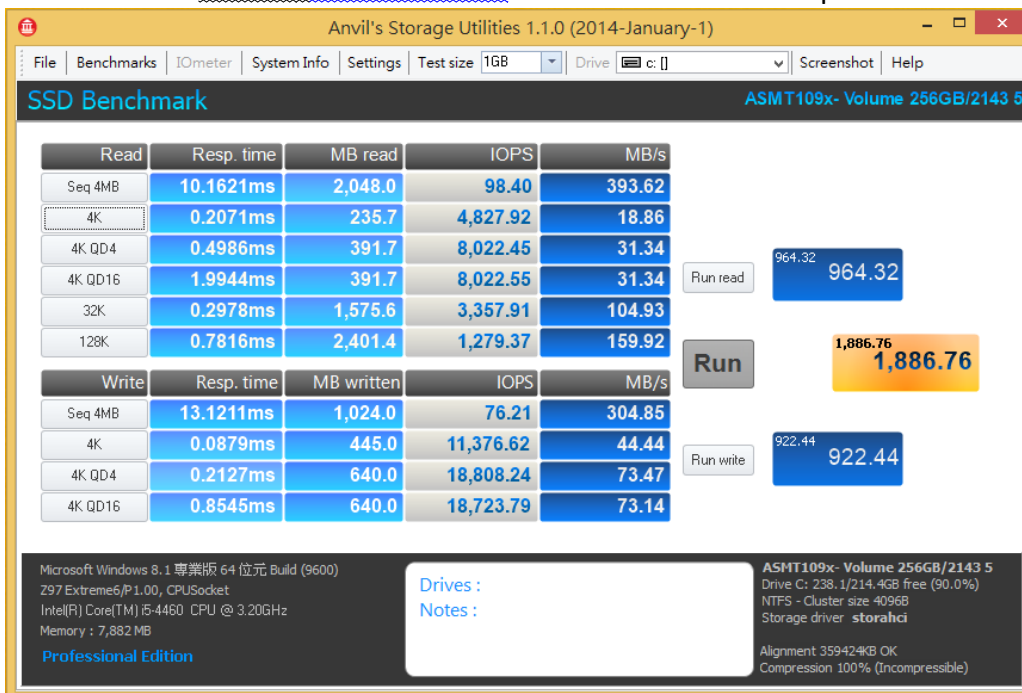
✂ Benchmark (Sequential Read / default block size = 8MB)

2.7.1 Used LITE-ON LGT-128M6Gx2 in Z97 Extreme 6 JBOD performance as below:



2.8 AnvilBenchmark_V110_B337

2.8.1 Used LITE-ON LGT-128M6Gx2 in Z97 Extreme 6 JBOD performance as below:

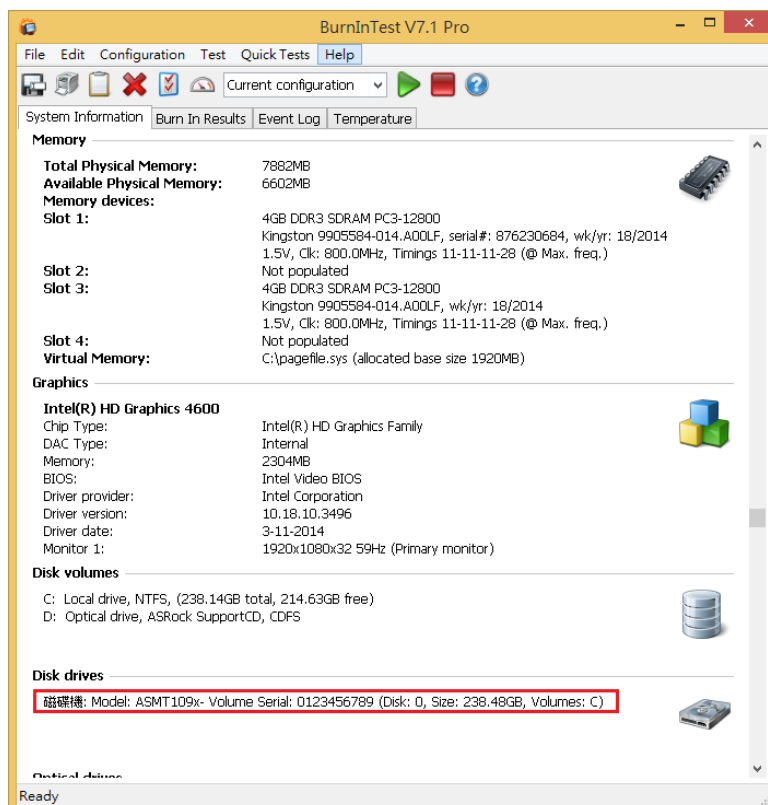
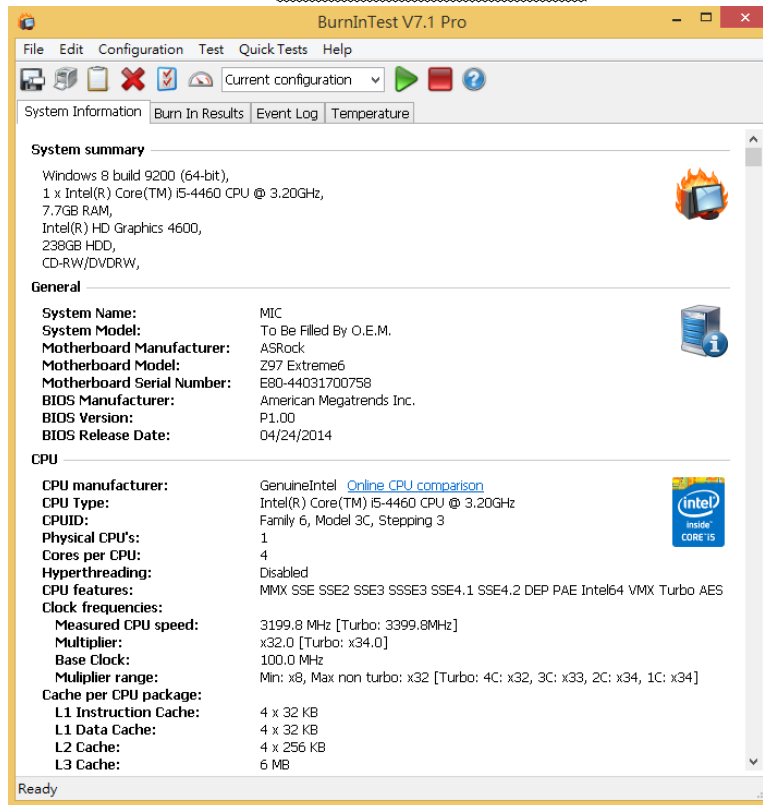


R2036F SATA III TO M.2 NGFF 2-port RAID Card

3. Burn In Tests and Results

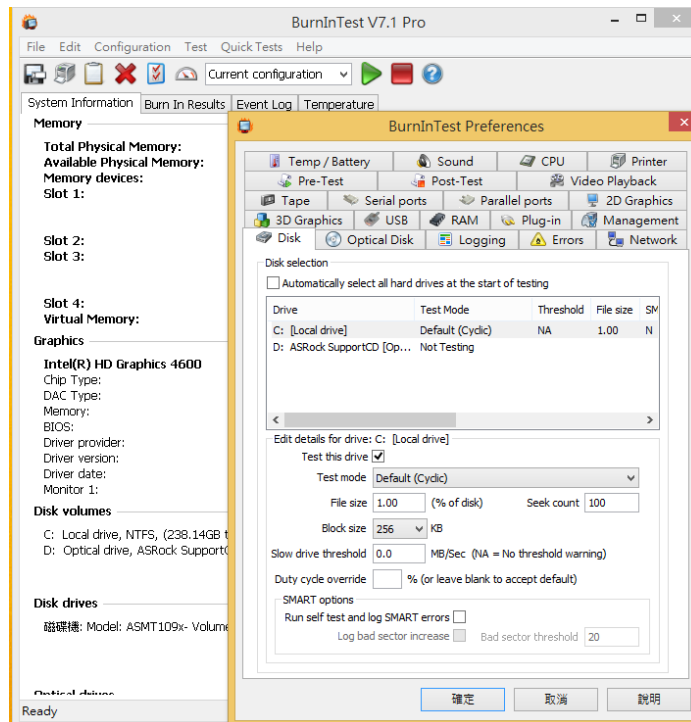
3.1 BurnInTest v7.1 Pro

3.1.1 system information for LITE-ON LGT-128M6Gx2 JBOD as below:

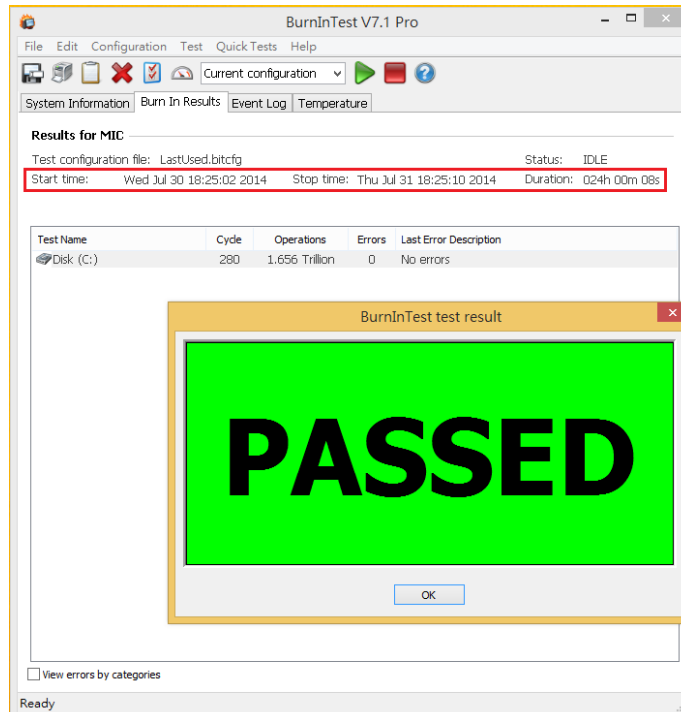


R2036F SATA III TO M.2 NGFF 2-port RAID Card

3.1.2 show LITE-ON LGT-128M6Gx2 JBOD test mode(default cyclic -- 10 ways cycle test)



3.1.3 show LITE-ON LGT-128M6Gx2 JBOD 24-hour Burn-in test PASSED



4. Summary

- 4.1 R2036F is SATA III Interface, I/O speed, max. to 600MB/s.
- 4.2 R2036F adapter I/O performance is based on M.2 SSD.